

## Floating Ball Valve - Model 8030

The Model 8030 Floating Ball Valve was engineered specifically for aerospace ground support applications that require excellent flow control, reliable actuation and durable service. These valves may be modified to meet customer face to face requirements.  
Made in USA.

### Specifications:

- Operating Pressure 6000 psig\*
- Proof Pressure 9000 psig
- Burst Pressure 24,000 psig
- Operating Temperatures See **Ordering Information**

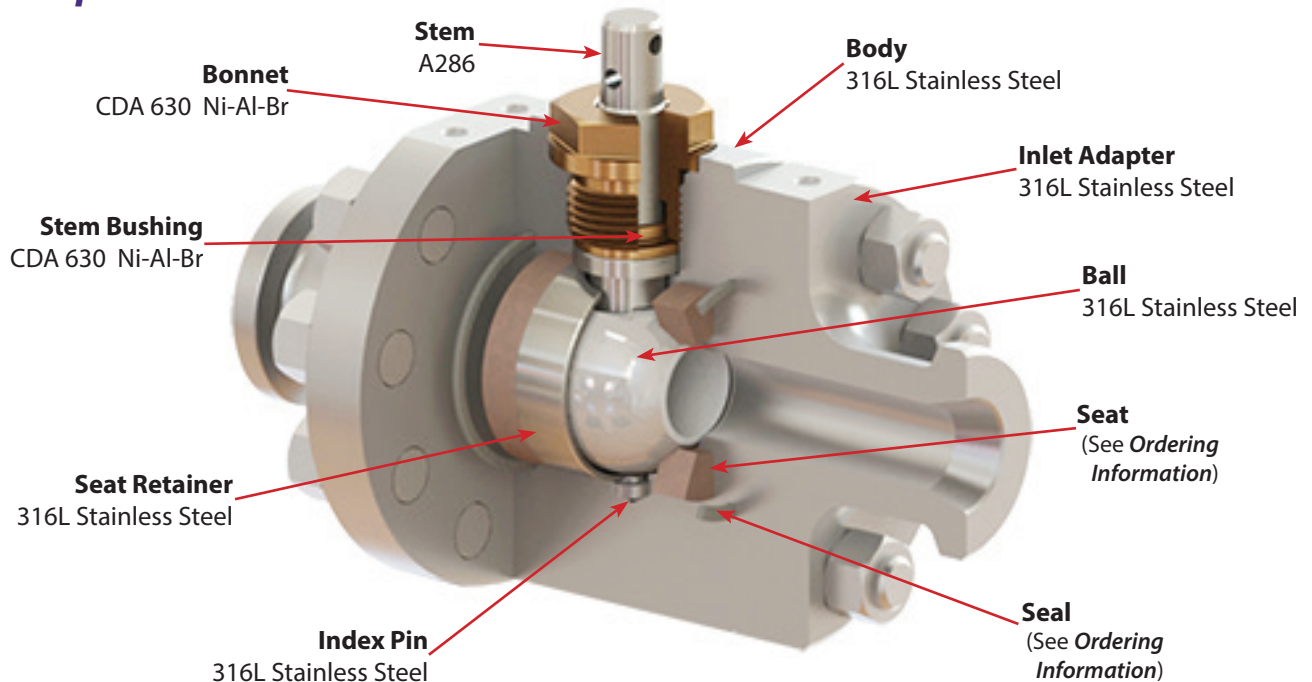
Size	C <sub>v</sub> (min.)	Weight (lb)**	Waterway Size ±.01
08	9	6	.435
12	18	10	.625
16	31	20	.875
24	57	46	1.097
32	133	85	1.686

\* Valve body pressure rating is 6000 psig. Seat material, hub/ring size and service temperature may limit maximum valve working pressure.

\*\*Weight of bare stem valve with Grayloc® Hubs

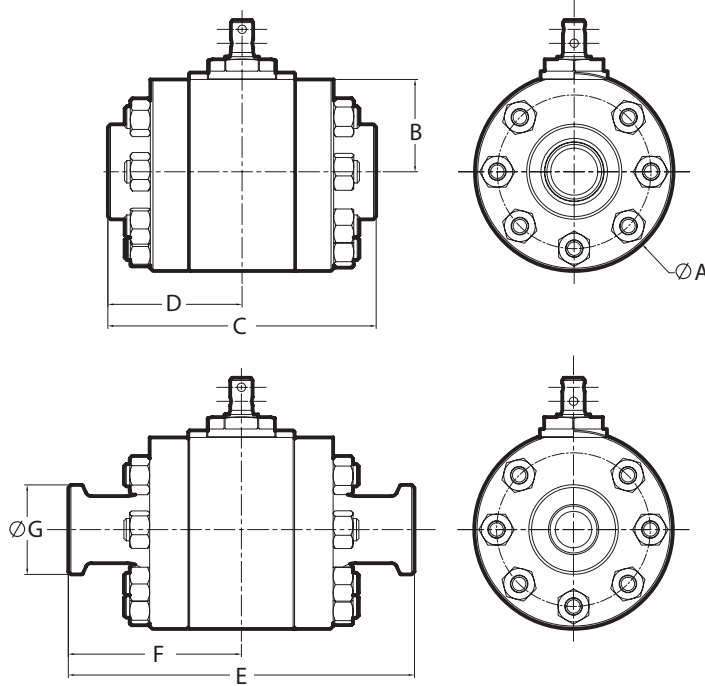


### Component Materials:



# Floating Ball Valve - Model 8030

## Dimensions:



AS5202				
Line Size	ØA ±.03	B ±.03	C ±.03	D ±.03
08	2.88	1.30	3.51	1.76
12	3.45	1.54	4.65	2.33
16	4.44	2.06	6.00	3.00
24	6.00	2.75	7.50	3.75
32	7.40	3.38	11.00	5.50

Grayloc® Hubs					
Line Size	Hub Size	Seal Ring	E ±.06	F ±.03	ØG ±.005
08	1GR5	05	5.75	2.88	2.000
12	1GR5	05	6.25	3.13	2.000
16	1GR5	05	7.74	3.87	2.000
	1GR7	07	7.74	3.87	2.000
24	1.5GR11	11	9.74	4.87	3.125
	1.5GR14	14	9.74	4.87	3.125
32	2GR14	14	12.50	6.25	3.625
	2GR20	20	12.50	6.25	3.625

## Ordering Information:

**8030 - K V 16 G07 -1**

### Basic Series

#### Seat Material

K	Kel-F	-65°F to +350°F** **
S	Vespel SP-21	-65°F to +550°F
V	Vespel SP-1	-65°F to +550°F
D	Delrin	-40°F to +180°F**
P	Peek	-65°F to +350°F

#### Seal Material

V	Viton	-15°F to +400°F*
B	Buna-N	-40°F to +275°F
R	Ethylene Propylene (EPR)	-65°F to +230°F
C	Chemraz	-20°F to +450°F
K	Kalrez	-20°F to +550°F

\*Operating temperature range may be dependant on application.

\*\* Reduces max pressure to 3000 psi or less.

### Operator

- Blank Lever (not available on 24 or 32)
- 1 Manual Gear (not avail. on 08)
- 2 Actuator Pneumatic, Double Acting
- 3 Actuator Pnuematic, Spring Return, Fail Close
- 4 Actuator Pnuematic, Spring Return, Fail Open

### End Connections

#### Line Size

08	1/2"
12	3/4"
16	1"
24	1 1/2"
32	2"

T  
GXX

Tube per AS5202  
Grayloc®  
XX (see table for Seal Ring)

## Ordering Repair Kits:

**8030 - K V 16 - RK**

### Basic Series

### Seat Material

### Line Size

### Seal Material