

Pressure Reducing Regulator - Model 8028

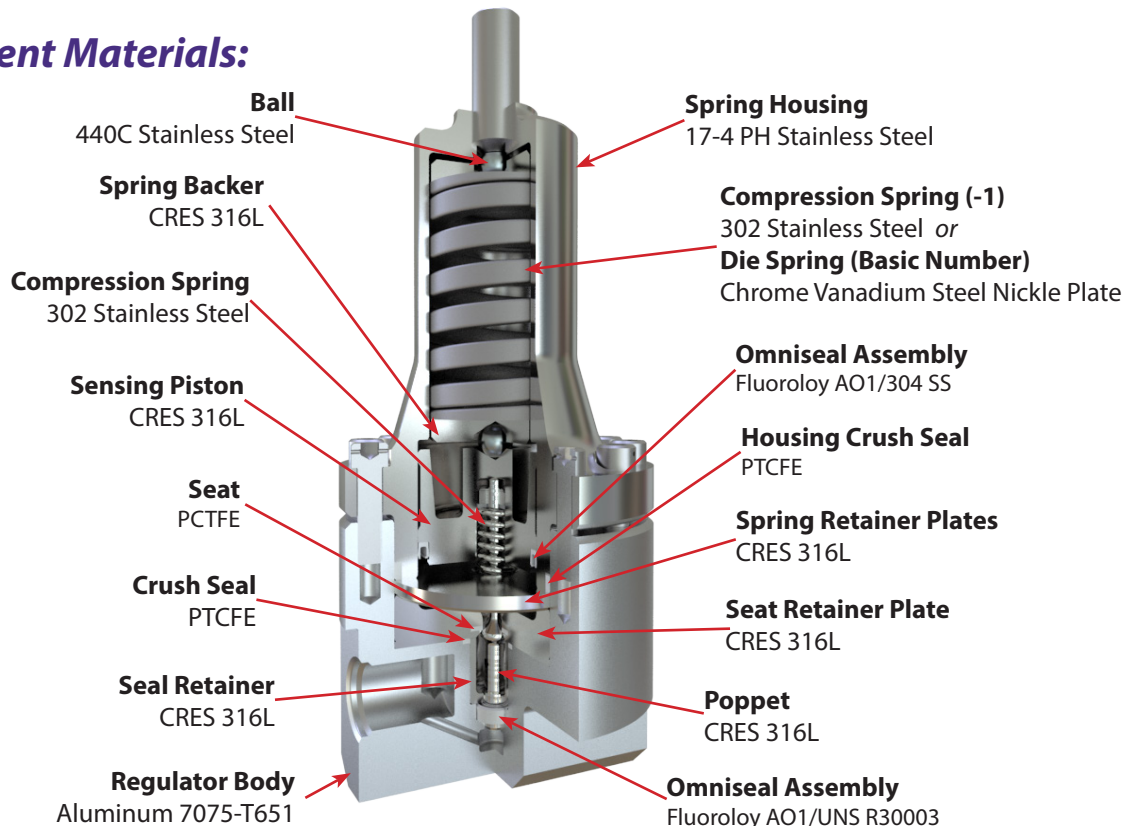
This manual pressure reducing regulator is designed for high pressure, high flow applications and can accommodate lower temperature gas flow. This is a light weight, corrosion resistant valve. Made in USA

Specifications:

- Flow Coefficient $C_v = .6$ minimum
- Pressures
 - Inlet MEOP 4400 psia
 - Outlet Pressure 30 to 500 psig
 - Proof Pressure 1.2x MEOP
 - Burst 2x MEOP
- Fluid Media Gaseous Nitrogen
- Line Regulation .8 psi rise per 100 psi inlet decay
- Weight 5.3 pounds
- Operating Temperatures -110°F to +160°F
- Leakage
 - Bubble Tight external
 - 5 SCCM max internal

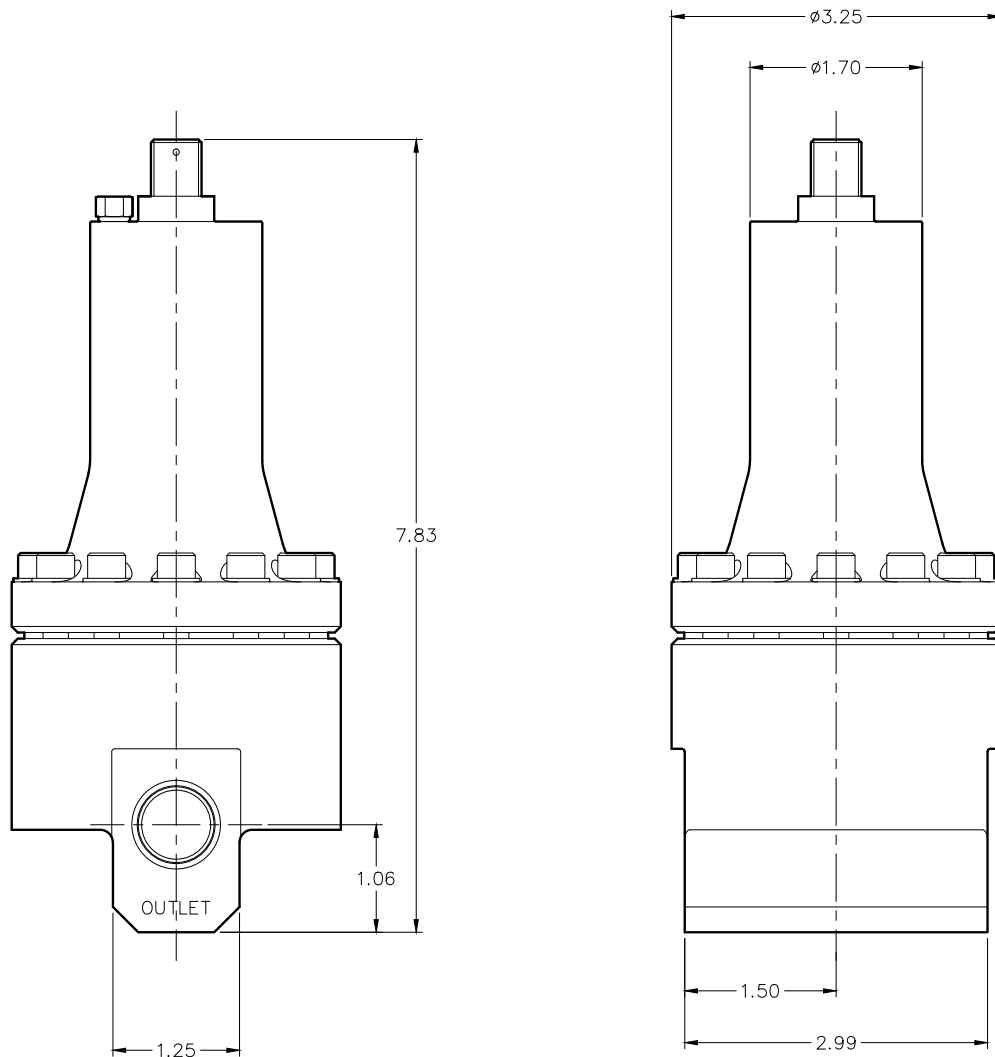


Component Materials:



Pressure Reducing Regulator - Model 8028

Dimensions:



Ordering Information:

8028-1

Basic Series

Outlet Range

- Blank 50-500 psig (set to 330 psig)
- 1 30-75 psig (set to 35 psig)